



Fiber Optic System

Table of Contents

Fiber Optic Plug and Play Cassettes

| | |
|--------------------------------------|----|
| 10 Gig Plug and Play Cassettes | 71 |
| LC Plug and Play Cassettes | 71 |
| SC Plug and Play Cassettes | 71 |

Fiber Optic Jumpers

| | |
|----------------------------------|--------|
| 10 Gig Fiber Optic Jumpers | 72 |
| MPO Fiber Optic Jumpers | 72 |
| LC Fiber Optic Jumpers | 72-73 |
| SC Fiber Optic Jumpers | 72, 74 |
| ST Fiber Optic Jumpers | 74 |
| MT-RJ Fiber Optic Jumpers | 72 |

Fiber Optic Patch Panels & Adapter Panels

| | |
|--|----|
| Fiber Optic Blank Patch Panels | 74 |
| LC Fiber Optic Adapter Panels | 75 |
| SC Fiber Optic Adapter Panels | 75 |
| ST Fiber Optic Adapter Panels | 75 |
| MT-RJ Fiber Optic Adapter Panels | 75 |
| Blank Fiber Optic Adapter Panels | 75 |

Fiber Optic Enclosures

| | |
|---|----|
| Fiber Optic Rack Mount Splice Enclosures | 76 |
| Fiber Optic Rack Mount Enclosures | 77 |
| Fiber Optic Loaded Rack Mount Enclosures | 78 |
| Fiber Optic Economy Wall Mount Enclosures | 79 |
| Fiber Optic Deluxe Wall Mount Enclosures | 79 |

Fiber Optic Splice Trays

| | |
|----------------------------------|----|
| Universal Splice Tray Kits | 78 |
| Splice Tray Kits | 78 |

Fiber Optic Connectors & Adapters

| | |
|----------------------------------|----|
| LC Fiber Optic Connectors | 80 |
| SC Fiber Optic Connectors | 80 |
| ST Fiber Optic Connectors | 80 |
| LC Fiber Optic Adapters | 80 |
| SC Fiber Optic Adapters | 80 |
| ST Fiber Optic Adapters | 80 |
| MT-RJ Fiber Optic Adapters | 80 |

Elite Multi-Media Outlets & Boxes

| | |
|--|----|
| Elite Multi-Media Outlets | 81 |
| Elite Multi-Media Boxes | 81 |
| Elite Bezels | 82 |
| Elite Fiber Optic Bezels | 82 |
| Elite Fiber Optic Low-Profile Bezels | 82 |

Fiber Optic System

Fiber Optic Rack Mount Solutions

Save with ICC™

ICC has expanded its fiber optic product line with NEW 10 Gig fiber optic jumpers to support high speed networks



ICC offers NEW fiber optic plug and play cassettes and NEW MPO fiber optic jumpers



Save with ICC™

Integrated ST and SC fiber optic enclosures for 24 fibers
Page 78

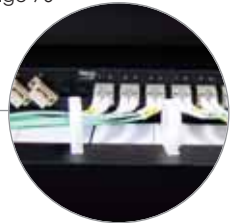


Need an alternate rack-mount solution? Customize fiber optic patch panels using loaded adapter panels
Page 75

Vertical finger duct panels mount on rack sides to route and hide fiber optic cables



NEW fiber optic enclosures with double-decker stacker unit for patching and splicing
Page 76



Save with ICC™

High density fiber optic enclosure with 3-panel openings for up to 36 SC fibers in 1 rack mount space



Create a complete multi-media solution with blank panels and SC, ST, LC, and MT-RJ fiber optic modular connectors
Page 35

ICC's fiber optic rack systems are ideal for future operation back bone systems and fiber-to-the-desktop. ICC offers a complete selection of splicing enclosures for rack and wall mount applications

Fiber Optic System

NEW Fiber Optic Plug and Play Cassettes

Save with ICC™

ICC's NEW pre-terminated fiber optic MPO cassette modules are designed with a simple "plug and play" system that requires no field termination or splicing, saving contractors significant amounts of time during installation

10 Gig products will support 10 Gigabit Ethernet and fiber channel and link specs

Various options for 10Gig, 50µm and 62.5µm SC and LC simplex and duplex connections

Cassettes are designed with port ID labels to help end users with a means for port identification.

Connectivity exceeds TIA 568-B.3 performance requirements



All ICC Fiber Cassettes are designed to easily snap into existing ICC enclosures

Back end of the cassette houses MPO adapters for quick plug and play for up to 12 fibers per adapter

Complete the Solution!



Fiber Optic Jumpers Page 72



LC Fiber Optic Plug and Play Cassette
ICFC12MLD6 LC multimode, duplex, 62.5/125µm
ICFC12ML1G LC multimode, duplex, 10G
ICFC12ML50 LC multimode, duplex, 50/125µm
 • 12 pre-terminated fibers
 • MPO fiber optic cassette

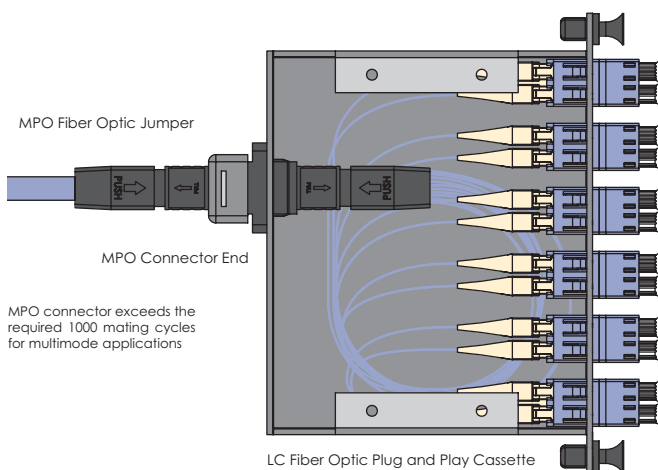


SC Fiber Optic Plug and Play Cassette
ICFC06MSS6 SC multimode, simplex, 62.5/125µm
 • 6 pre-terminated fibers
 • MPO fiber optic cassette



SC Fiber Optic Plug and Play Cassette
ICFC12MSD6 SC multimode, duplex, 62.5/125µm
ICFC12MS1G SC multimode, duplex, 10G
ICFC12MS50 SC multimode, duplex, 50/125µm
 • 12 pre-terminated fibers
 • MPO fiber optic cassette

Save with ICC™ No tool kits, no splicing, no mess. Take the headache out of installation.



MPO connector exceeds the required 1000 mating cycles for multimode applications

ICC's new pre-terminated fiber optic MPO cassette modules are designed with a simple "plug and play" system that requires no field termination or splicing, saving contractors significant amounts of time during installation. Get premium quality at affordable prices for optimum fiber optic technology from ICC!



End User Benefits and Key product Features

- Eliminates field assembly and field termination saving significant amounts of time
- Allows easy access on both ends (front and back) for patching
This also saves significant time and reduces overall installation costs
- All components are factory terminated and tested eliminating the need for further on-field testing
- Cassettes provide a "plug and play" solution with the added assurance that it will work 100 % of the time, ensuring network reliability

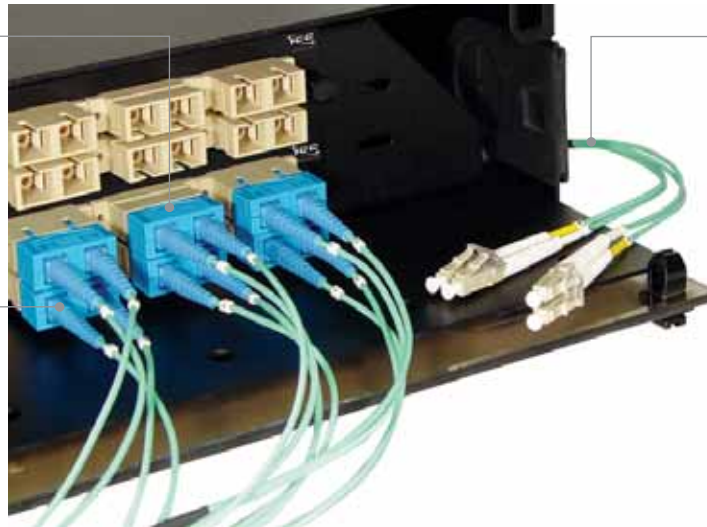
Fiber Optic System

Fiber Optic Jumpers

Save with ICC™

Want to get higher profit margins on quality crafted fiber optic products that exceed performance standards? ICC's new 10Gig laser optimized fiber optic jumpers are factory terminated, 100% individually tested, and exhibit extremely low Insertion Loss of **0.2dB**; all at a fraction of the cost of the competition

All ICC fiber optic jumpers meet ANSI/UL 1666-1997 standards and are manufactured with OFNR riser-rated cable



ICC offers a complete selection of fiber optic jumpers available in all hybrids of LC, SC, ST, MPO, and MT-RJ connector ends

Incorporate ICC fiber optic jumpers in a wide range of fiber solutions including rack and wall mounted enclosures

Complete the Solution!



Fiber Optic Enclosures Page 76



10 Gig LC-LC Fiber Optic Jumper
ICFOJ1G6xx*
LC to LC simplex, multimode,
50/125µm, 10 Gig

*xx = 01, 02, 03, 05 meters in length
Note: Housing, boot and clip colors may vary



10 Gig LC-LC Fiber Optic Jumper
ICFOJ1G7xx*
LC to LC duplex, multimode,
50/125µm, 10 Gig

*xx = 01, 02, 03, 05 meters in length
Note: Housing, boot and clip colors may vary



10 Gig LC-SC Fiber Optic Jumper
ICFOJ2G6xx*
LC to SC simplex, multimode,
50/125µm, 10 Gig

*xx = 01, 02, 03, 05 meters in length
Note: Housing, boot and clip colors may vary



10 Gig LC-SC Fiber Optic Jumper
ICFOJ2G7xx*
LC to SC duplex, multimode,
50/125µm, 10 Gig

*xx = 01, 02, 03, 05 meters in length
Note: Housing, boot and clip colors may vary



10 Gig SC-SC Fiber Optic Jumper
ICFOJ8G6xx*
SC to SC simplex, multimode,
50/125µm, 10 Gig

*xx = 01, 02, 03, 05 meters in length
Note: Housing, boot and clip colors may vary



10 Gig SC-SC Fiber Optic Jumper
ICFOJ8G7xx*
SC to SC duplex, multimode,
50/125µm, 10 Gig

*xx = 01, 02, 03, 05 meters in length
Note: Housing, boot and clip colors may vary



10 Gig MPO Fiber Optic Jumper
ICFOJA5Gxx*
MPO to MPO, multimode,
50/125µm, 10 Gig

*xx = 05, 10, 15, 20, 30, 50 meters in length
Note: Housing, boot and clip colors may vary



MPO Fiber Optic Jumper
ICFOJA55xx*
MPO to MPO, multimode,
50/125µm

*xx = 05, 10, 15, 20, 30, 50 meters in length
Note: Housing, boot and clip colors may vary



MPO Fiber Optic Jumper
ICFOJA56xx*
MPO to MPO, multimode,
62.5/125µm

*xx = 05, 10, 15, 20, 30, 50 meters in length
Note: Housing, boot and clip colors may vary



LC-LC Fiber Optic Jumper
ICFOJ1M2xx* 50/125µm
ICFOJ1M6XX* 62.5/125µm
LC to LC simplex, multimode

*xx = 01, 02, 03, 05 meters in length
Note: Housing, boot and clip colors may vary



LC-LC Fiber Optic Jumper
ICFOJ1M5xx*
LC to LC duplex, singlemode

*xx = 01, 02, 03, 05 meters in length
Note: Housing, boot and clip colors may vary



LC-LC Fiber Optic Jumper
ICFOJ1M3xx*
LC to LC duplex, multimode,
62.5/125µm

*xx = 01, 02, 03, 05 meters in length
Note: Housing, boot and clip colors may vary

Fiber Optic System

Fiber Optic Jumpers

NEW MPO Fiber Optic Jumpers



NEW 10Gig LC Fiber Optic Jumpers



NEW 10Gig SC Fiber Optic Jumpers



ST Fiber Optic Jumpers



MT-RJ Fiber Optic Jumpers



Save with ICC™

ICC offers new 10Gig laser optimized fiber optic jumpers that are factory terminated, 100% individually tested, and exhibit extremely low Insertion Loss

Designed to support high-speed data transfer providing reliable fiber optic connections

Complete the Solution!



Modular Connectors Page 13

Fiber Optic System



LC-SC Fiber Optic Jumper

ICFOJ2M6xx*

LC to SC simplex, multimode, 50/125µm

*xx = 01, 02, 03, 05 meters in length

Note: Housing, boot and clip colors may vary



LC-SC Fiber Optic Jumper

ICFOJ2M3xx*

LC to SC duplex, multimode, 62.5/125µm

*xx = 01, 02, 03, 05 meters in length

Note: Housing, boot and clip colors may vary



LC-ST Fiber Optic Jumper

ICFOJ3M3xx*

LC to ST duplex, multimode, 62.5/125µm

*xx = 01, 02, 03, 05 meters in length

Note: Housing, boot and clip colors may vary



MTRJ-LC Fiber Optic Jumper

ICFOJ0M3xx*

MT-RJ to LC duplex, multimode, 62.5/125µm

*xx = 01, 02, 03, 05 meters in length

Note: Housing, boot and clip colors may vary



MTRJ-MTRJ Fiber Optic Jumper

ICFOJ4T6xx*

MT-RJ to MT-RJ duplex, multimode, 62.5/125µm

*xx = 01, 02, 03, 05 meters in length

Note: Housing, boot and clip colors may vary



MTRJ-SC Fiber Optic Jumper

ICFOJ5T6xx*

MT-RJ to SC duplex, multimode, 62.5/125µm

*xx = 01, 02, 03, 05 meters in length

Note: Housing, boot and clip colors may vary



MTRJ-ST Fiber Optic Jumper

ICFOJ6T6xx*

MT-RJ to ST duplex, multimode, 62.5/125µm

*xx = 01, 02, 03, 05 meters in length

Note: Housing, boot and clip colors may vary



SC-SC Fiber Optic Jumper

ICFOJ8C2xx* Simplex

ICFOJ8C3xx* Duplex

SC to SC, multimode, 62.5/125µm

*xx = 01, 02, 03, 05 meters in length

Note: Housing, boot and clip colors may vary

Save with ICC™ Customize ICC's multi-media blank patch panels with fiber modular connectors!



ICC offers a wide selection of modular connectors that easily snap into multi-media blank patch panels! Get the solution that offers flexibility and convenience to fit any installation requirement. Select from ICC's data, voice, audio, video, and **fiber optic modular connectors** to customize multi-media blank patch panels with. Modular connectors come in a variety of colors, and are designed to make installations fast, easy, and reliable.

Description

Fiber Optic Modular Connectors
Multi-Media Blank Patch Panels

Page

13
35-37

Fiber Optic System



SC-SC Fiber Optic Jumper
ICFOJ8C6xx* Simplex
ICFOJ8C7xx* Duplex
 SC to SC, multimode, 50/125µm

*xx = 01, 02, 03, 05 meters in length
 Note: Housing, boot and clip colors may vary



SC-ST Fiber Optic Jumper
ICFOJ9C2xx* Simplex
ICFOJ9C3xx* Duplex
 SC to ST, multimode, 62.5/125µm

*xx = 01, 02, 03, 05 meters in length
 Note: Housing, boot and clip colors may vary



SC-ST Fiber Optic Jumper
ICFOJ9C6xx* Simplex
ICFOJ9C7xx* Duplex
 SC to ST, multimode, 50/125µm

*xx = 01, 02, 03, 05 meters in length
 Note: Housing, boot and clip colors may vary



ST-ST Fiber Optic Jumper
ICFOJ7C2xx* Simplex
ICFOJ7C3xx* Duplex
 ST to ST, multimode, 62.5/125µm

*xx = 01, 02, 03, 05 meters in length
 Note: Housing, boot and clip colors may vary



ST-ST Fiber Optic Jumper
ICFOJ7C6xx* Simplex
ICFOJ7C7xx* Duplex
 ST to ST, multimode, 50/125µm

*xx = 01, 02, 03, 05 meters in length
 Note: Housing, boot and clip colors may vary



SC-SC Fiber Optic Jumper
ICFOJ8C4xx*
 SC to SC simplex, singlemode

*xx = 01, 02, 03, 05 meters in length
 Note: Housing, boot and clip colors may vary



SC-SC Fiber Optic Jumper
ICFOJ8C5xx*
 SC to SC duplex, singlemode

*xx = 01, 02, 03, 05 meters in length
 Note: Housing, boot and clip colors may vary



SC-ST Fiber Optic Jumper
ICFOJ9C4xx*
 SC to ST simplex, singlemode

*xx = 01, 02, 03, 05 meters in length
 Note: Housing, boot and clip colors may vary



SC-ST Fiber Optic Jumper
ICFOJ9C5xx*
 SC to ST duplex, singlemode

*xx = 01, 02, 03, 05 meters in length
 Note: Housing, boot and clip colors may vary



ST-ST Fiber Optic Jumper
ICFOJ7C4xx*
 ST to ST simplex, singlemode

*xx = 01, 02, 03, 05 meters in length
 Note: Housing, boot and clip colors may vary



ST-ST Fiber Optic Jumper
ICFOJ7C5xx*
 ST to ST duplex, singlemode

*xx = 01, 02, 03, 05 meters in length
 Note: Housing, boot and clip colors may vary

Save with ICC™ Customize ICC's fiber optic blank patch panels with adapter panels!

Customize Fiber Optic Blank Patch Panels with Adapter Panels!



Want a fast way to install custom fiber optic connectivity on 19" distribution racks? ICC offers fiber optic blank patch panels that are designed to accommodate fiber optic adapter panels. Fiber optic blank patch panels fit on all standard 19" racks, and are a perfect economical solution for adding fiber optic connectivity with flexible customizing options.

| Part Number | Description |
|-------------|------------------------------|
| ICFORPP1RM | 3-Panel, 1 rack mount space |
| ICFORPP2RM | 6-Panel, 2 rack mount spaces |



3-Panel Fiber Optic Blank Patch Panel



6-Panel Fiber Optic Blank Patch Panel

Fiber Optic System

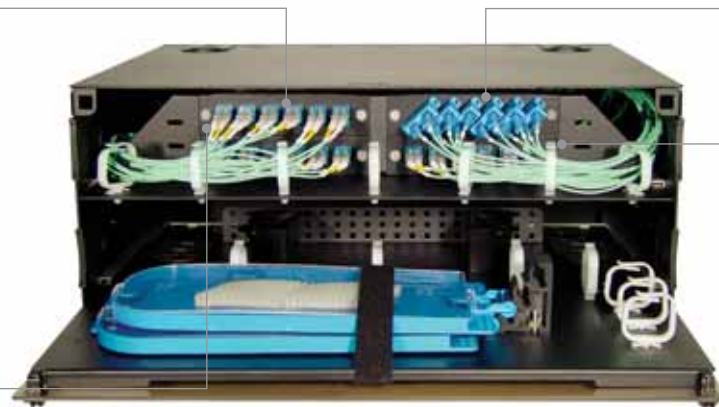
Fiber Optic Adapter Panels



Save with ICC™

ICC's fiber optic adapter panels are designed to customize fiber optic rack enclosures, wall mount enclosures, and blank patch panels for true flexibility and multi-media

Designed with easy to use push-pins for fast changes and for a secure and snug fit



Available in LC, SC, ST, and MT-RJ hybrid styles

Contractors can custom configure ICC's 4-Port blank adapter panel with any data, voice, audio, video, and fiber optic ICC modular connector

Complete the Solution!



Fiber Optic Enclosures Page 79



LC-LC Fiber Optic Adapter Panel

ICFOPL16BK LC to LC

- Loaded panel with 6-duplex LC adapters
- Multimode/singlemode



SC-SC Fiber Optic Adapter Panel

ICFOPS16BK SC to SC, metal sleeve

ICFOPS26BK SC to SC, ceramic sleeve

- Loaded panel with 6-simplex SC adapters
- Multimode/singlemode



SC-SC Fiber Optic Adapter Panel

ICFOPC16BK SC to SC, metal sleeve

ICFOPC26BK SC to SC, ceramic sleeve

- Loaded panel with 6-duplex SC adapters
- Multimode/singlemode



ST-ST Fiber Optic Adapter Panel

ICFOPT16BK ST to ST, metal sleeve

ICFOPT26BK ST to ST, ceramic sleeve

- Loaded panel with 6-simplex ST adapters
- Multimode/singlemode



ST-ST Fiber Optic Adapter Panel

ICFOPT18BK ST to ST, metal sleeve

ICFOPT28BK ST to ST, ceramic sleeve

- Loaded panel with 6-duplex ST adapters
- Multimode/singlemode



SC-ST Fiber Optic Adapter Panel

ICFOPR16BK SC to ST, metal sleeve

ICFOPR26BK SC to ST, ceramic sleeve

- Loaded panel with 6-duplex SC-ST adapters
- Multimode/singlemode



MTRJ-MTRJ Fiber Optic Adapter Panel

ICFOPM08BK MT-RJ to MT-RJ

- Loaded panel with 8-duplex MT-RJ adapters
- Multimode/singlemode



Blank Fiber Optic Adapter Panel

ICFOPJ04BK

- 4-Port unloaded panel
- Accepts any ICC modular connector



Blank Fiber Optic Adapter Panel

ICFOPB00BK

- Blank panel
- Covers unused openings

Fiber Optic System

NEW Fiber Optic Rack Mount Splice Enclosures



Save with ICC™

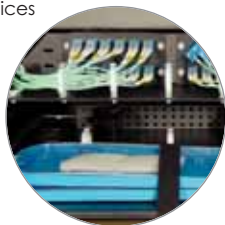
NEW fiber optic enclosures offer both splicing and patching! Contractors now have more flexibility with newly designed enclosures that support terminating of fiber optics, and can also be custom configured with ICC's wide selection of fiber optic adapter panels

NEW Universal splice trays support routing and storing fiber splices



2-tier slide-out trays are designed to support patching on the top and splicing on the bottom

Cable management routing clips are available on both top and bottom trays to help route fiber optic cables and maintain cable bend radius



Fiber Optic Rack Mount Splice Enclosure
ICFOR444BK

4-Panel, 4-Splice, 4 rack mount spaces

- Includes (1) universal splice tray (holds up to 4 universal splice trays)
- Includes (8) tie wraps, and (4) Velcro® tie wraps and (4) tie loops
- Includes grounding hardware, ID labels, and #12 rack screws



Fiber Optic Rack Mount Splice Enclosure
ICFORS3096

96-Splice, 3 rack mount spaces

- Includes (2) universal splice trays (holds up to 4 universal splice trays)
- Includes (12) tie wraps, and (1) 1 3/4" splice tray fastener strip
- Includes grounding hardware, ID labels, and #12 rack screws



Fiber Optic Rack Mount Splice Enclosure
ICFOR54192

192-Splice, 4 rack mount spaces

- Includes (6) universal splice trays (holds up to 8 universal splice trays)
- Includes (12) tie wraps, and (1) 1 3/4" splice tray fastener strip
- Includes grounding hardware, ID labels, and #12 rack screws



Fiber Optic Rack Mount Enclosure
ICFOR102BK

2-Panel, 1 rack mount space

- Holds up to (2) adapter panels, and 1 small or 1 large splice tray
- Includes (8) tie wraps, and (2) Velcro® tie wraps
- Includes ID labels, and #12 rack screws

Fiber Optic System

Fiber Optic Rack Mount Enclosures

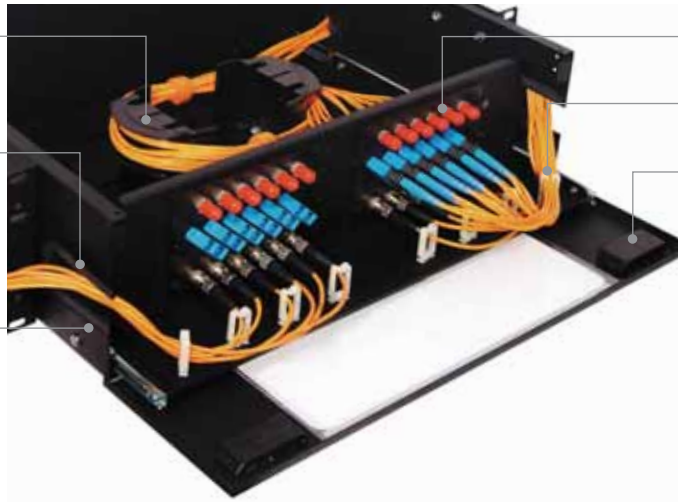


Save with ICC™

Adjustable internal fiber cable management rings ensure cable is routed properly

Numerous fiber cable access points are protected with grommets to protect fiber optic cables from pinching, damage, and to prevent dust from entering the system

Slide-out design provides additional access room during installation

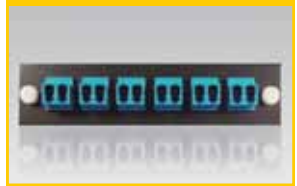


Customize with a variety of fiber optic adapter panels

Adjustable front cable management routing clips

Swing down front cover with clear window and locking latch

Complete the Solution!



Fiber Adapter Panels Page 75



Fiber Optic Rack Mount Enclosure
ICFOR103BK

3-Panel, 1 rack mount space

- Holds up to (3) adapter panels, and 1 small or 1 large splice tray
- Includes (8) tie wraps, and (2) Velcro® tie wraps
- Includes ID labels, and #12 rack screws



Fiber Optic Rack Mount Enclosure
ICFOR204BK

4-Panel, 2 rack mount spaces

- Holds up to (4) adapter panels, and 4 small or 2 large splice trays
- Includes (8) tie wraps, and (4) Velcro® tie wraps
- Includes grounding hardware, ID labels, and #12 rack screws



Fiber Optic Rack Mount Enclosure
ICFOR306BK

6-Panel, 3 rack mount spaces

- Holds up to (6) adapter panels, and 6 small or 3 large splice trays
- Includes (8) tie wraps, and (4) Velcro® tie wraps
- Includes grounding hardware, ID labels, and #12 rack screws



Fiber Optic Rack Mount Enclosure
ICFOR412BK

12-Panel, 3 rack mount spaces

- Holds up to (12) adapter panels, and 8 small or 4 large splice trays
- Includes (8) tie wraps, and (4) Velcro® tie wraps
- Includes grounding hardware, ID labels, and #12 rack screws

Fiber Optic System

Fiber Optic Loaded Rack Mount Enclosures

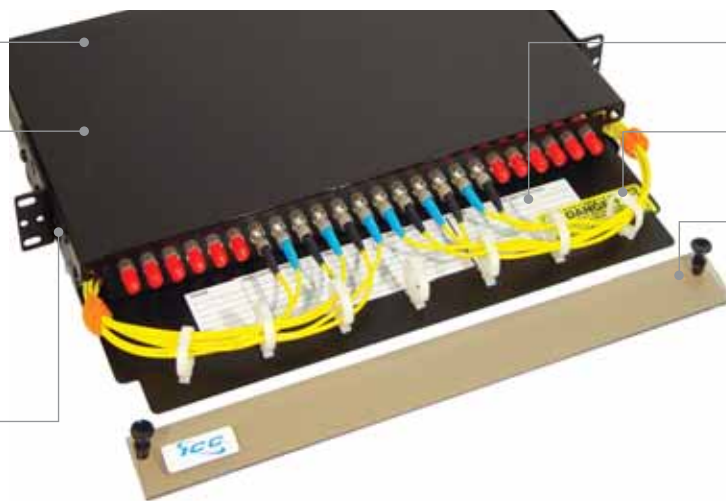


Save with ICC™

ICC offers new pre-loaded ST and SC fiber optic rack mount enclosures

Maximizes space and saves contractors time from installing individual fiber optic adapters to populate the enclosure

Internal rear cable management spools are available to help route fiber optic cables



Circuit identification and danger labels are included for proper labeling

Front cable management routing clips help maintain cable bend radius

Clear lexan cover with easy push-pin design

Complete the Solution!



Fiber Optic Adapters Page 80



SC Fiber Optic Rack Mount Enclosure ICFORSC024

Loaded panel with 24-simplex SC adapters, 1 rack mount space

- Holds 1 small or 1 large splice tray
- Includes (2) tie wraps, and (4) Velcro® tie loops
- Includes ID labels, and #12 rack screws



ST Fiber Optic Rack Mount Enclosure ICFORST024

Loaded panel with 24-simplex ST adapters, 1 rack mount space

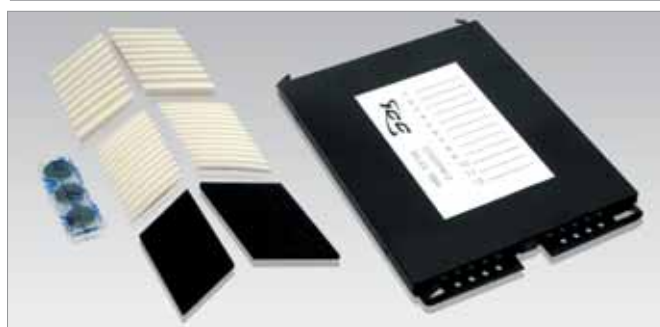
- Holds 1 small or 1 large splice tray
- Includes (2) tie wraps, and (4) Velcro® tie loops
- Includes ID labels, and #12 rack screws



Universal Splice Tray Kit ICFOSTUF24

24-Splice universal splice tray

- Includes (2) left and (2) right mechanical fusion sleeves
- Includes (2) left and (2) right position fusion sleeves
- Includes (4) tie wraps



Splice Tray Kit

ICFOSTFM12 12-Splice small splice tray
ICFOSTFM24 24-Splice large splice tray

- 2-piece base and cover; cover with index label and foam pad
- Includes left and right side sleeves for bare fusion, fusion with sleeve, and mechanical splice ribbon fusion
- Includes tie wraps, and male-to-female Velcro® pairs

Fiber Optic System

Fiber Optic Wall Mount Enclosures

Save with ICC™

Wall mounted fiber optic enclosures provide a safe environment for managing your fiber optic connectivity

Lockable front access doors provide added security and prevent unwanted access

Built in adjustable cable management ring provides easy cable routing



Dual access doors allow for quick access and added room to install or manage the system

Fiber optic wall mount enclosures can be customized with any ICC fiber optic adapter panel allowing for flexible installations



Fiber Optic System



Economy Fiber Optic Wall Mount Enclosure

ICFOD102BK

2-Panel, Single Door

- Holds up to (4) adapter panels, and 1 small or 1 large splice tray
- Includes (4) tie wraps, and (4) adhesive harness standoff clips
- Includes circuit ID and danger labels



Economy Fiber Optic Wall Mount Enclosure

ICFOD104BK

4-Panel, Single Door

- Holds up to (4) adapter panels, and 1 small or 1 large splice tray
- Includes (4) tie wraps, and (4) adhesive harness standoff clips
- Includes circuit ID and danger labels



Deluxe Fiber Optic Wall Mount Enclosure

ICFOD202BK

2-Panel, Dual Door with Padded Lock and Keys

- Holds up to (2) adapter panels, and 1 small or 1 large splice tray
- Includes (2) tie wraps, and (2) Velcro® tie loops
- Includes circuit ID and danger labels



Deluxe Fiber Optic Wall Mount Enclosure

ICFOD204BK

4-Panel, Dual Door with Padded Lock and Keys

- Holds up to (4) adapter panels, and 2 small or 2 large splice trays
- Includes (4) tie wraps, and (2) Velcro® tie loops
- Includes circuit ID and danger labels

Fiber Optic System

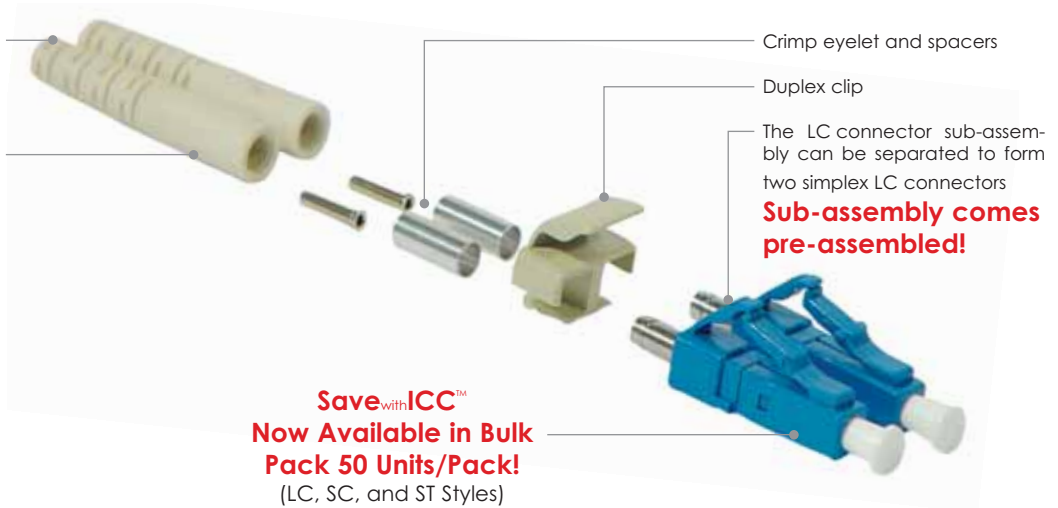
Epoxy Type Fiber Optic Connectors

Save with ICC™

ICC offers new LC epoxy type fiber optic connectors that are designed for easy use and to be field terminated

Comes complete with strain relief boots

Designed for superior mating with any LC adapter, high speed data transmission, and broadband internet



LC Fiber Optic Connector
ICFOC9MM02

- LC, duplex
- Multimode, 62.5/125µm
 - Includes 25 duplex cups



SC Fiber Optic Connector
ICFOC8MM01

- SC, simplex
- Multimode, 62.5/125µm
 - Designed to be field terminated



SC Fiber Optic Connector
ICFOC8MM02

- SC, duplex
- Multimode, 62.5/125µm
 - Designed to be field terminated



ST Fiber Optic Connector
ICFOC7MM01

- ST, simplex
- Multimode, 62.5/125µm
 - Designed to be field terminated



Fiber Optic Adapter
ICFOA5MM02

LC-LC duplex



Fiber Optic Adapter
ICFOA8MM01

SC-SC simplex, multi-mode/singlemode, metal sleeve



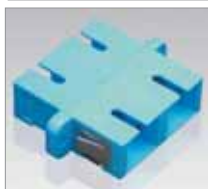
Fiber Optic Adapter
ICFOA8SM01

SC-SC simplex, single-mode, ceramic sleeve



Fiber Optic Adapter
ICFOA8MM02

SC-SC duplex, multi-mode/singlemode, metal sleeve



Fiber Optic Adapter
ICFOA8SM02

SC-SC duplex, single-mode, ceramic sleeve



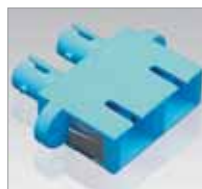
Fiber Optic Adapter
ICFOA7MM01

ST-ST simplex, multi-mode/singlemode, metal sleeve



Fiber Optic Adapter
ICFOA7SM01

ST-ST simplex, single-mode, ceramic sleeve



Fiber Optic Adapter
ICFOA9MM02

SC-ST duplex, multi-mode/singlemode, metal sleeve



Fiber Optic Adapter
ICFOA9SM02

SC-ST duplex, single-mode, ceramic sleeve



Fiber Optic Adapter
ICFOA6MS02

MTRJ-MTRJ duplex

Fiber Optic System

Elite™ Multi-Media Outlets

ELITE™

ICC's Elite multi-media outlet consolidates multiple fiber and copper inputs and distributes them to multiple workstations

The bottom is designed with bezel openings that can be custom configured with low-profile fiber optic bezels. The vertical design allows fiber to be routed with very little stress



A sleek and thin design allows multi-media outlets to fit in tight confined spaces and can easily be mounted to walls, desks, or any types of surface

Front loading bezels can be custom configured with ICC modular connectors for voice, data, audio, video, and addition fiber optic connectivity



Fiber Optic Multi-Media Outlet
IC108WBSxx*

Single, cover and base

- 2 front bezel openings and 2 low-profile bezel openings
- Distributes up to 16 fiber optic connections supporting 8 users
- Fits standard NEMA boxes
- Includes mounting screws, **2 pcs.**

*xx = GY, IV, WH
● ● ●



Fiber Optic Multi-Media Outlet
IC108WBDxx*

Double, cover and base

- 4 front bezel openings and 3 low-profile bezel openings
- Distributes up to 28 fiber optic connections supporting 14 users
- Fits standard NEMA boxes
- Includes mounting screws, **4 pcs.**

*xx = GY, IV, WH
● ● ● ●



Multi-Media Box
IC108MMBxx*

Cover and base

- 1 front and 6 side bezel openings
- Fills the need for Multi-user Telecommunications Outlet Assembly (MUTOA)
- Includes 4" cable ties, **4 pcs.**
- Includes mounting screws, **5 pcs.**

*xx = GY, IV, WH
● ● ● ● ●



Euro Style Multi-Media Box
IC108CE1xx*

Cover and base

- 1 front bezel opening
- Complies with standard European dimensions
- Includes mounting screws, **2 pcs.**

*xx = GY, IV, WH
● ● ●

Helpful Tips: Want to incorporate work area cabling to various users from a central location?



ICC's multi-media box is perfect for use as a multi-user telecommunications outlet assembly (MUTOA) to distribute copper and fiber optics to the work area in an open office environment. **The multi-media box allows you to bring several horizontal cabling drops into one central location, so it is easy to distribute cabling to numerous work areas.**

Key Features:

- Eliminates the need to modify existing horizontal cable runs when office layouts change
- Designed with knockouts on all four sides, to easily integrate with ICC's raceway system
- Supports up to **14 Users**



Fiber Optic System



Elite Bezel
IC108BFBxx*
Blank, flat

*xx = GY, IV, WH
● ○ ○



Elite Bezel
IC108BF1xx*
1-Port, flat

*xx = GY, IV, WH
● ○ ○



Elite Bezel
IC108BF2xx*
2-Port, flat

*xx = GY, IV, WH
● ○ ○



Elite Bezel
IC108BA1xx*
1-Port, angled

*xx = GY, IV, WH
● ○ ○



Elite Bezel
IC108BA2xx*
2-Port, angled

*xx = GY, IV, WH
● ○ ○



Elite Fiber Optic Bezel
IC108BFTxx*
2 ST simplex, flat, metal sleeve ferrule

*xx = GY, IV, WH
● ○ ○



Elite Fiber Optic Bezel
IC108BFCxx*
SC duplex, flat, metal sleeve ferrule

*xx = GY, IV, WH
● ○ ○



Elite Fiber Optic Bezel
IC108BACxx*
SC duplex, angled, metal sleeve ferrule

*xx = GY, IV, WH
● ○ ○



Elite Fiber Optic Bezel
IC108BFDxx*
2 SC duplex, flat, metal sleeve ferrule

*xx = GY, IV, WH
● ○ ○



Elite Fiber Optic Bezel
IC108BFRxx*
SC-ST duplex, flat, metal sleeve ferrule

*xx = GY, IV, WH
● ○ ○



Elite Fiber Optic Bezel
IC108BARxx*
SC-ST duplex, angled, metal sleeve ferrule

*xx = GY, IV, WH
● ○ ○



Fiber Optic Bezel
ICFOBWBxx*
LC duplex, low-profile bezel; use with multi-media outlets only

*xx = GY, IV, WH
● ○ ○



Fiber Optic Bezel
ICFOBWTBxx*
ST duplex, low-profile bezel; use with multi-media outlets only

*xx = GY, IV, WH
● ○ ○



Fiber Optic Bezel
ICFOBWCBxx*
SC duplex, low-profile bezel; use with multi-media outlets only

*xx = GY, IV, WH
● ○ ○



Fiber Optic Bezel
ICFOBWRBxx*
ST-SC duplex, low-profile bezel; use with multi-media outlets only

*xx = GY, IV, WH
● ○ ○



Fiber Optic Bezel
ICFOBWMBxx*
MT-RJ duplex, low-profile bezel; use with multi-media outlets only

*xx = GY, IV, WH
● ○ ○

Save with ICC™ Customize ICC's Elite bezels with any ICC modular connector!



Want your fiber optic installations to have seamless integration with ICC's copper product lines? Contractors can customize ICC's Elite blank bezels with any style of data, voice, audio, video, and fiber optic modular connector! Having both copper and fiber optic connectivity within the same installation allows for true flexibility when it comes to add's, moves, and changes. Elite blank bezels are available in 1 and 2-Port blank, and flat and angled styles. They can be custom configured in ICC's Elite multi-media outlets.

Page 13